

SS Series: Torque Detectors for Rotating and Stationary Shafts.

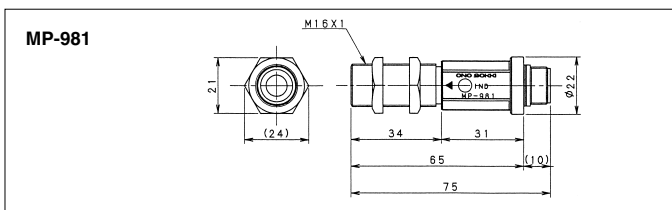
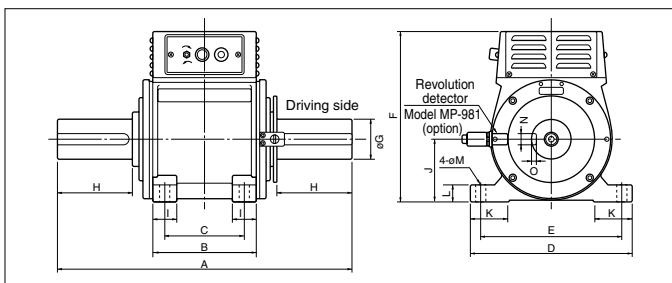
Wide measurement range, from Stationary to High-Speed.



The SS Series has a long performance sales record in a wide variety of applications, including performance tests of motors, pumps, compressors, blowers, boring machine, and gears. Thanks to the economics of mass production, these detectors are as inexpensive as strain gauge types and they are stocked for immediately delivery. High rigidity results from the unitized cast-casing construction. Combining high performance with ease of use, these standard-type torque detectors require no maintenance or replacement of parts. this series features 13 models, covering the range from 0.2N·m to 2000N·m.

Notes:

- (1) SS series torque detectors can be connected to any models of TS-series digital torque meters except the TS-7700 Torque Station Pro.
- (2) The standard cable length for torque signal cable is 5 meter and can be extended on request with extra charge when ordering.
- (3) Recommended coupling
Model SS-002 to SS-100: Micro coupling
Model SS-200 to SS-202: Form-flex coupling
(Please refer to the page 16 in details.)



Dimensions

SS	A	B	C	D	E	F	øG	H	I	J	K	L	øM	N ^{ø9}	O	Weight (kg)
002, 005, 010, 020, 050	200	104	70	130	105	167	8 ^{h6}	17	32	50 ⁰ _{-0.2}	25	15	10	—	—	5
100, 200	220	104	70	130	105	167	14 ^{h6}	27	32	50 ⁰ _{-0.2}	25	15	10	5	3	5.5
500, 101	300	150	115	200	170	230	25 ^{h6}	45	35	80 ⁰ _{-0.5}	40	20	14	8	4	14
201, 501	350	150	115	200	170	230	36 ^{h6}	70	35	80 ⁰ _{-0.5}	40	20	14	10	5	15
102, 202	430	150	115	230	200	245	55 ^{h6}	110	35	90 ⁰ _{-0.5}	55	25	14	16	6	23

*Please refer to the page 10 for the dimensions of the detector shaft ends.

Model SS	Measurement range (N·m)	Minimum resolution (mN·m)	Revolution range (r/min)	Inertia moment (kgm ²)	Spring constant (N·m/rad)
002	0.2	0.1	0 to 6000	4.25 x 10 ⁻⁵	1.67 x 10
005	0.5	0.1	0 to 6000	4.25 x 10 ⁻⁵	4.12 x 10
010	1	1	0 to 6000	4.25 x 10 ⁻⁵	8.24 x 10
020	2	1	0 to 6000	4.25 x 10 ⁻⁵	1.67 x 10 ²
050	5	1	0 to 6000	4.25 x 10 ⁻⁵	4.12 x 10 ²
100	10	10	0 to 8000	5.00 x 10 ⁻⁵	7.75 x 10 ²
200	20	10	0 to 8000	5.00 x 10 ⁻⁵	1.57 x 10 ³
500	50	10	0 to 6000	1.30 x 10 ⁻³	6.18 x 10 ³
101	100	100	0 to 6000	1.30 x 10 ⁻³	1.27 x 10 ⁴
201	200	100	0 to 6000	1.45 x 10 ⁻³	2.54 x 10 ⁴
501	500	100	0 to 6000	1.50 x 10 ⁻³	6.18 x 10 ⁴
102	1000	1000	0 to 5000	5.00 x 10 ⁻³	1.67 x 10 ⁵
202	2000	1000	0 to 5000	5.25 x 10 ⁻³	3.43 x 10 ⁵

Specifications

- Accuracy : ±0.2%/Full Scale (when combined with model TS-3200 and TS-2700 on N-0 compensation.)
±0.5%/Full Scale (when combined with model TS-2100.)
- Operating temperature : 0°C to +50°C
Storage temperature : -20°C to +80°C
Operating humidity : 95% maximum
Vibration : 50m/s² maximum
Connection : Connector (Model TRC-12A10-7M10.5 at cable side)
Revolution detecting gear : Attached as standard
Power requirement : 100/120/220/240/VAC, 50/60Hz
(Please specify the voltage when ordering.)
- Accessories : Power cable(2.4 meter) x 1 pc.
Torque signal cable(5 meter) x 1 pc.
Instruction manual x 1 copy
Inspection certificate x 1 copy
Key of the detector shaft ends (Model SS-100 to SS-202 only)
- Options : Revolution detector (Model MP-981)
Revolution signal cable (Model MX-800 series)
Rotational direction of the the attached motor of torque detector is changed externally.
(Only for wiring without exchange switch)
CE marking

Revolution detector Model MP-981(option)



Specifications

- Measurement range : 1 to 20,000 r/min
(60 P/R)
Measurement accuracy : ±0.02% / Full Scale
at reference time
(1 second) of TS series
Operating temperature : 0°C to +70°C
Weight : Approx. 80 g